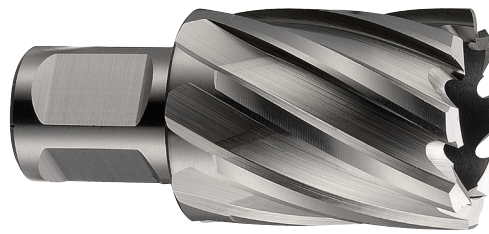


**AVAILABLE NOW**

# ANNULAR CUTTERS



## 1" Cut Depth

Part No.	Cutter Diameter	Qty.	Price
BRT-AC16311	7/16	1	\$23.75
BRT-AC16321	1/2	1	23.75
BRT-AC16331	9/16	1	27.05
BRT-AC16341	5/8	1	30.05
BRT-AC16351	11/16	1	30.05
BRT-AC16361	3/4	1	32.45
BRT-AC16371	13/16	1	35.95
BRT-AC16381	7/8	1	40.25
BRT-AC16391	15/16	1	43.45
BRT-AC16401	1 INCH	1	43.45
BRT-AC16411	1-1/16	1	49.15
BRT-AC16421	1-1/8	1	51.45
BRT-AC16431	1-3/16	1	52.45
BRT-AC16441	1-1/4	1	57.75
BRT-AC16451	1-5/16	1	59.95
BRT-AC16461	1-3/8	1	63.75

## • HIGH TUNGSTEN HSS • WELDON SHANK

Part No.	Cutter Diameter	Qty.	Price
BRT-AC16471	1-7/16	1	\$69.25
BRT-AC16481	1-1/2	1	70.95
BRT-AC16491	1-9/16	1	74.95
BRT-AC16501	1-5/8	1	78.25
BRT-AC16511	1-11/16	1	88.65
BRT-AC16521	1-3/4	1	95.35
BRT-AC16531	1-13/16	1	102.25
BRT-AC16541	1-7/8	1	107.95
BRT-AC16551	1-15/16	1	110.95
BRT-AC16561	2 INCH	1	121.15
BRT-AC16571	2-1/16	1	124.25
BRT-AC16581	2-1/8	1	130.85
BRT-AC16591	2-3/16	1	139.35
BRT-AC16601	2-1/4	1	142.65
BRT-AC16611	2-5/16	1	149.55
BRT-AC16621	2-3/8	1	153.45

Pins: BRT-ACP13710 - PIN for 7/16"x 1" \$5.30 ea.

Pins: BRT-ACP00902 - PIN for 1/2" & Larger x 1" \$5.30 ea.

## 2" Cut Depth

Part No.	Cutter Diameter	Qty.	Price
BRT-AC16312	7/16	1	\$31.65
BRT-AC16322	1/2	1	31.65
BRT-AC16332	9/16	1	34.05
BRT-AC16342	5/8	1	37.05
BRT-AC16352	11/16	1	37.05
BRT-AC16362	3/4	1	39.55
BRT-AC16372	13/16	1	44.55
BRT-AC16382	7/8	1	48.35
BRT-AC16392	15/16	1	54.85
BRT-AC16402	1 INCH	1	54.85
BRT-AC16412	1-1/16	1	58.85
BRT-AC16422	1-1/8	1	64.45
BRT-AC16432	1-3/16	1	66.85
BRT-AC16442	1-1/4	1	70.95
BRT-AC16452	1-5/16	1	74.15
BRT-AC16462	1-3/8	1	81.45

## • HIGH TUNGSTEN HSS • WELDON SHANK

Part No.	Cutter Diameter	Qty.	Price
BRT-AC16472	1-7/16	1	\$90.25
BRT-AC16482	1-1/2	1	93.45
BRT-AC16492	1-9/16	1	101.55
BRT-AC16502	1-5/8	1	105.55
BRT-AC16512	1-11/16	1	111.95
BRT-AC16522	1-3/4	1	115.25
BRT-AC16532	1-13/16	1	124.95
BRT-AC16542	1-7/8	1	141.05
BRT-AC16552	1-15/16	1	145.05
BRT-AC16562	2 INCH	1	157.15
BRT-AC16572	2-1/16	1	160.35
BRT-AC16582	2-1/8	1	168.45
BRT-AC16592	2-3/16	1	180.55
BRT-AC16602	2-1/4	1	184.95
BRT-AC16612	2-5/16	1	194.25
BRT-AC16622	2-3/8	1	199.15

Pins: BRT-ACP13720 - PIN for 7/16"x 2" \$5.90 ea.

Pins: BRT-ACP00903 - PIN for 1/2" & Larger x 2" \$5.90 ea.

RMEINC@rmepvd.com

784 Imperial Road North, Guelph, Ontario Canada, N1K 1Z3